



# THE LANGBRIDGE

## 2 BEDROOM TERRACED HOUSE

The Langbridge is a well-proportioned modern 2-bedroom terraced house. The total area of internal space is approximately 71sq metres (764 sq. feet).

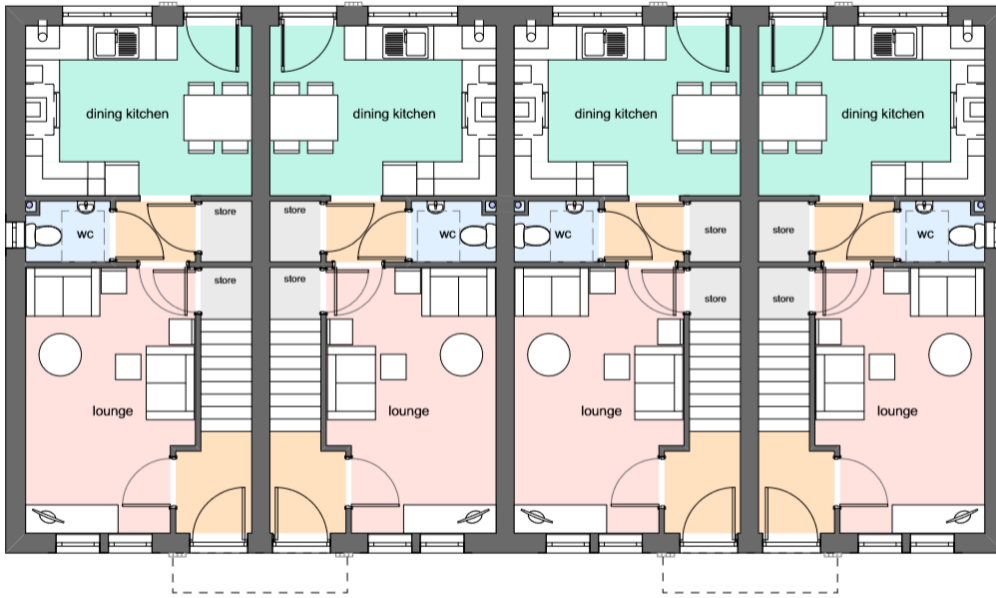
It offers a spacious lounge with two feature windows providing generous amounts of natural light. A door leads into the inner hallway which provides a built-in storage cupboard and downstairs cloaks w/c. A bright modern dining kitchen with a door leading on to the private rear garden. Upstairs provides a generous master bedroom with modern family bathroom and a further bedroom ideal for guests or a child's nursery.

Gardens front and rear, private driveway.

Freehold. LABC Warranty. Help To Buy Available.

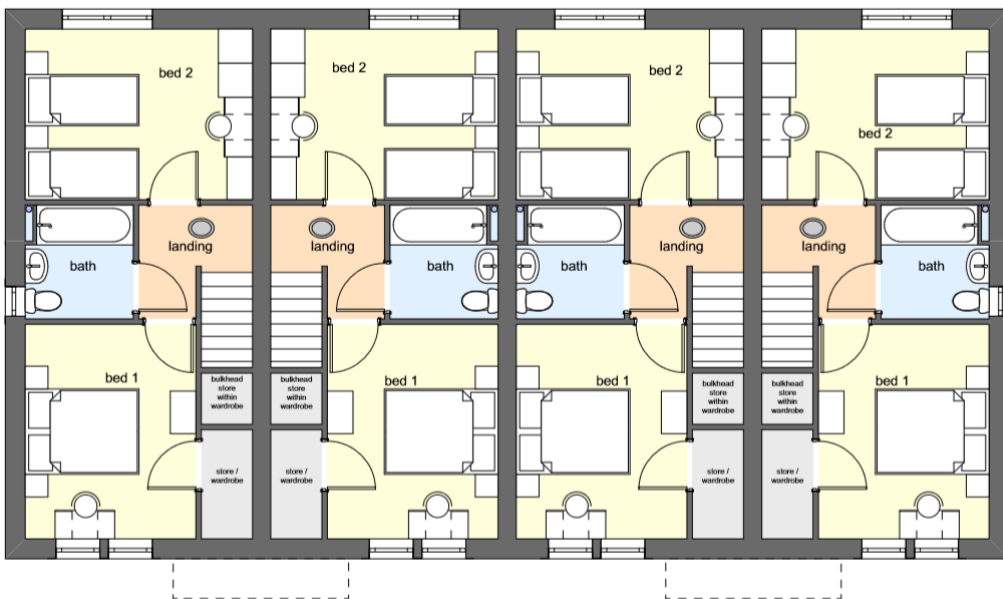
## 2 BEDROOM TERACED HOUSE

GROSS INTERNAL AREA: 71.6sqm



### Ground Floor:

Kitchen: 3.99m x 3.0m  
Lounge: 3.02m x 5.68m



### First Floor:

Bedroom 1: 4.05m x 3.07m  
Bedroom 2: 3.14m x 3.05m  
Bathroom: 2.02m x 2.10m

### Specialist New Build Mortgage Advice

We have a team of new build expert advisers who specialise in helping you find the best mortgage for your chosen brand-new property. Our professional team will take you through the entire house buying process, from the initial mortgage application, to dealing with solicitors and surveyors, we will help with completion of the reservation form and do the help to buy paperwork where relevant.

Our team work within a professional brokerage offering impartial advice and represent you as the client and not the bank. We have access to thousands of the latest mortgage deals and exclusive new build specific mortgage deals that aren't available directly from lenders or via many other brokers.



**CONSUMER  
CODE FOR  
HOME BUILDERS**

[www.consumercode.co.uk](http://www.consumercode.co.uk)