



# The Chelford

## 3 BEDROOM DETACHED HOUSE

The Chelford is a well-proportioned three bedroom detached house with substantial accommodation for growing families or professional couples in search of extra space. The total area of internal space is approximately 88 square metres (947 sq. feet).

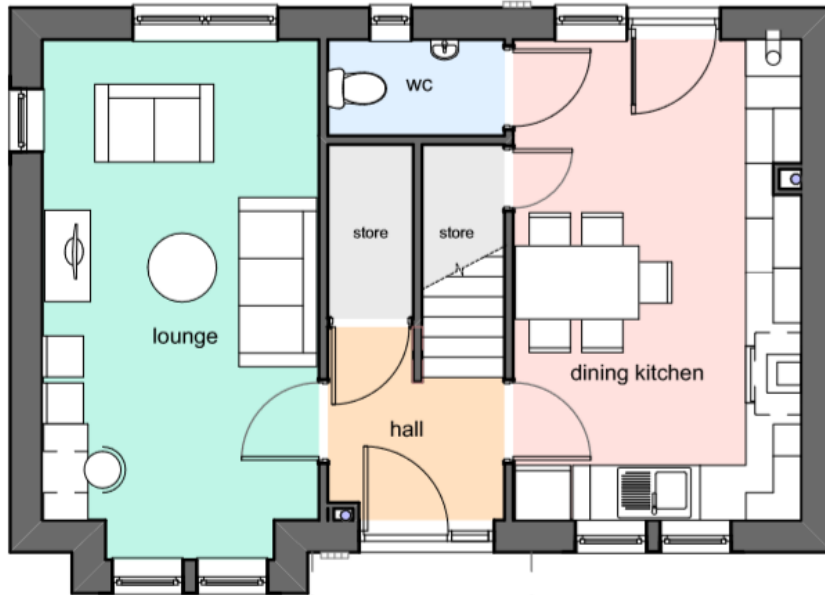
The entrance hallway leads to a modern breakfasting kitchen, which opens out on to the private rear garden maximizing natural light and views outside. There is also a useful guest cloakroom downstairs. The lounge is large, bright and airy with a dual aspect.

Upstairs, the landing leads to a well proportioned en-suite master bedroom, a further comfortable double bedroom and a well-proportioned third, plus a main bathroom and a convenient storage closet.

Gardens to front and rear, private driveway.

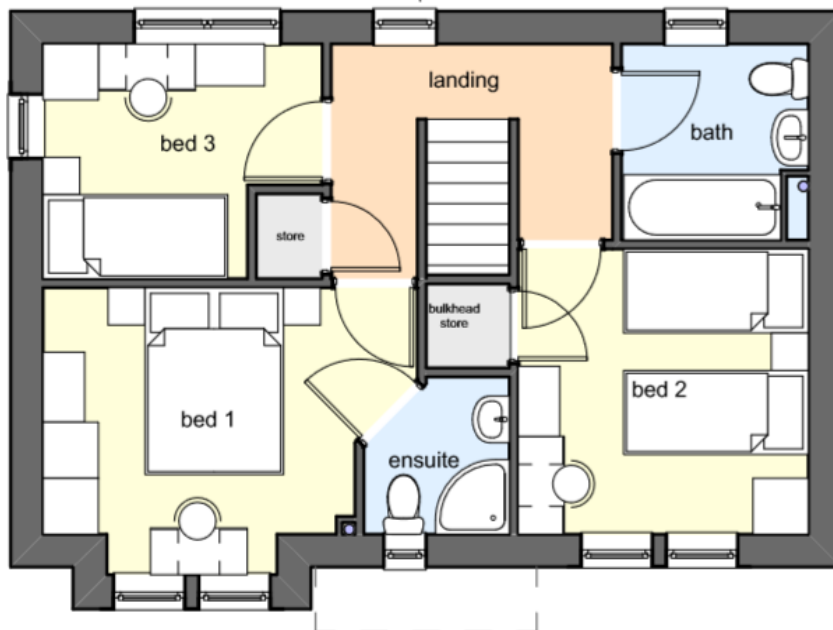
Freehold. LABC Warranty. Help To Buy available.

## 3 BEDROOM DETACHED HOUSE GROSS INTERNAL AREA: 88.6sqm



### Ground Floor

Kitchen: 3.14m x 5.25m  
Lounge: 3.02m x 5.68m



### First Floor

Bedroom 1: 4.05m x 3.07m  
Bedroom 2: 3.14m x 3.05m  
Bedroom 3: 3.02m x 2.51m  
Bathroom: 2.02m x 2.10m

### Specialist New Build Mortgage Advice

We have a team of new build expert advisers who specialise in helping you find the best mortgage for your chosen brand-new property. Our professional team will take you through the entire house buying process, from the initial mortgage application, to dealing with solicitors and surveyors, we will help with completion of the reservation form and do the help to buy paperwork where relevant.

Our team work within a professional brokerage offering impartial advice and represent you as the client and not the bank. We have access to thousands of the latest mortgage deals and exclusive new build specific mortgage deals that aren't available directly from lenders or via many other brokers.



**CONSUMER  
CODE FOR  
HOME BUILDERS**

[www.consumercode.co.uk](http://www.consumercode.co.uk)