



The Astwell

3 BEDROOM SEMI-DETACHED HOUSE

The Astwell is a well-proportioned three bedroom semi-detached house, with a versatile layout which would suit couples and families alike. The total area of internal space is approximately 89sq metres, (947 sq. feet).

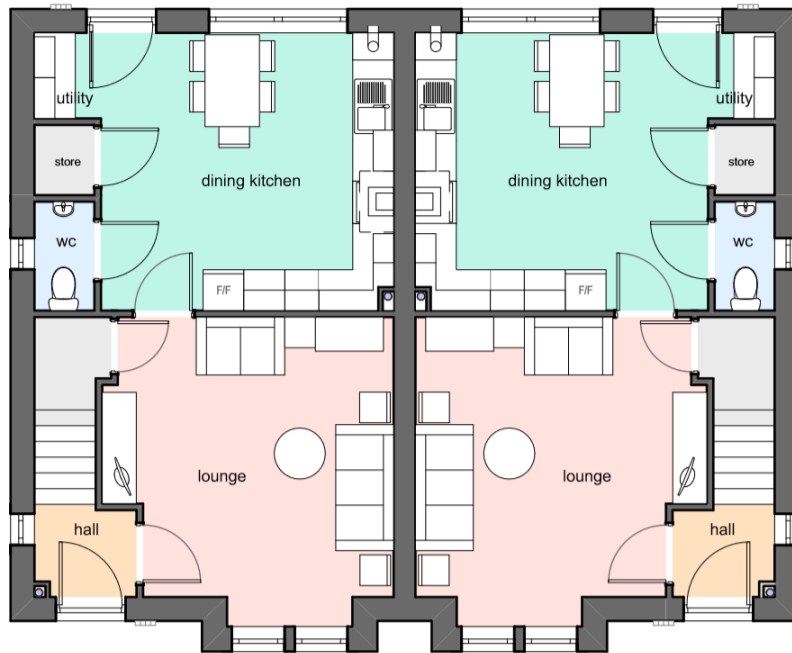
The lounge is perfect for relaxing or entertaining with a modern dining kitchen providing plenty of space for relaxed family meal times. There is also a handy storage cupboard and guest cloak room. Upstairs, the master bedroom includes an en-suite shower room also on the first floor, are a further two bedrooms and a family bathroom.

Gardens front and rear.

Freehold and LABC. Help To Buy available

3 BEDROOM SEMI-DETACHED HOUSE

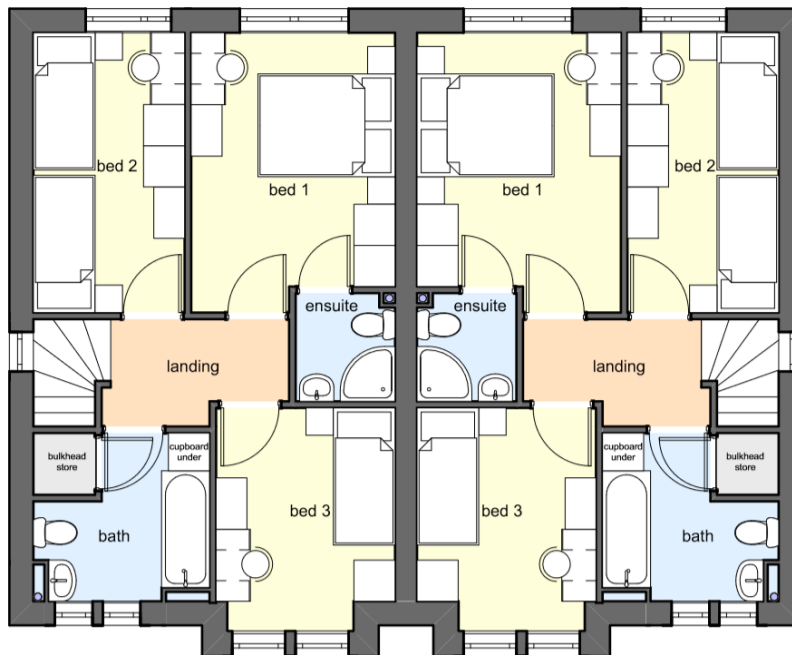
GROSS INTERNAL AREA: 89sqm



Ground Floor

Kitchen: 5.27m x 4.08m

Lounge: 4.28m x 4.54m



First Floor

Bedroom 1: 2.97m x 4.08m

Bedroom 2: 2.20m x 4.08m

Bedroom 3: 2.61m x 3.25m

Bathroom: 2.57m x 2.45m

Specialist New Build Mortgage Advice

We have a team of new build expert advisers who specialise in helping you find the best mortgage for your chosen brand-new property. Our professional team will take you through the entire house buying process, from the initial mortgage application, to dealing with solicitors and surveyors, we will help with completion of the reservation form and do the help to buy paperwork where relevant.

Our team work within a professional brokerage offering impartial advice and represent you as the client and not the bank. We have access to thousands of the latest mortgage deals and exclusive new build specific mortgage deals that aren't available directly from lenders or via many other brokers.



**CONSUMER
CODE FOR
HOME BUILDERS**

www.consumercode.co.uk